

## RADDLE

Fits in the beater (2 dents per inch)  
Used to spread the warp when  
beaming. It has an open top which  
can be covered with top of beater.

6258-1000	Voyageur, Dorothy 15.75" (40 cm)	\$29.50
6258-2000	Meco 22" (56 cm)	\$48.00
6258-9001	Compact 24"	\$48.00
6258-9002	Voyageur, Dorothy 24" (60 cm)	\$48.00
6258-4000	36"	\$55.00
6258-5000	45"	\$70.00
6258-6000	60"	\$90.00



## PADDLE

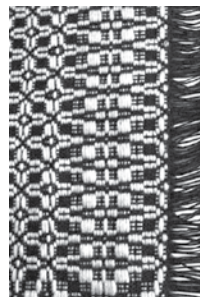
Used for warping  
with more than  
four ends (up to  
twenty threads).  
You make the  
cross by sliding the  
yarn up or down in  
the slot.

**6148-1000 \$25.00**

## 5" Thread Clipper

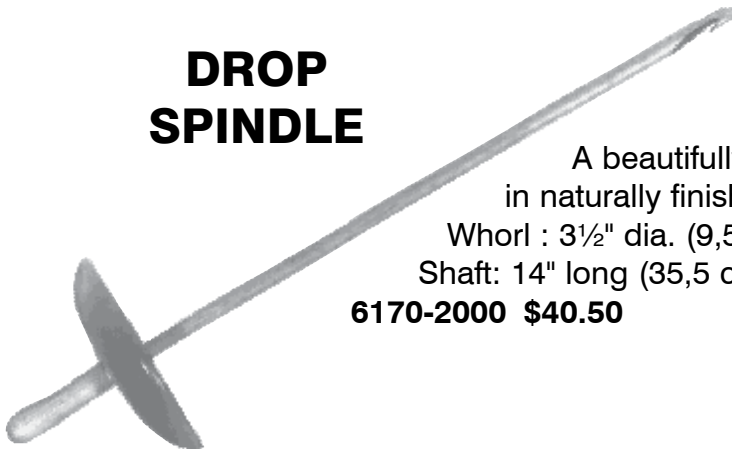
Lightweight and very sharp!  
Right or left handed!

Can be used on the loom  
or for finishing  
woven fabric.



**6148-1001  
\$17.00**

## DROP SPINDLE



A beautifully balanced spindle,  
in naturally finished hard wood.

Whorl : 3½" dia. (9,5 cm)

Shaft: 14" long (35,5 cm)

**6170-2000 \$40.50**





## WARP-CROSS LOCK

developed by Carl Heaman-Warne

Used to stabilizing and locking the warp cross from the warping board or mill. Simple and easy to use, it gives weavers piece of mind, even if someone stores the warp chain.

**6147-2000 Set of 2 Cross-Lock \$41.00**

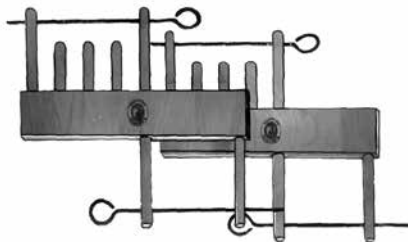


## SHAFT STABILIZER

Used on counter-balanced and countermarch looms to keep shafts at same level and distance while threading.

**6147-3000 \$30.00**

## TREADING HELPER



Used as a harness stabilizer and a support for the lease sticks and raddle. It holds the cross at a convenient height during the threading. May be used in a variety of configurations as shown below.

**6147-4000 \$78.00 (2 pieces)**

